

BRUKSSTADEN *RE:CONNECTED*

Bruksstaden is a new neighborhood emerging at the intersection of railway, industry, and landscape. Here we are building a circular, inclusive urban district with around 1,000 homes, workspaces, and collective amenities.

We design regeneratively, through the lenses of **nature, people, and materials**, from soil restoration and adaptive reuse of buildings to social ownership and accessible public spaces.

The industrial legacy and proximity to the railway are not obstacles, but opportunities to *re:connect* past and future, city and landscape.

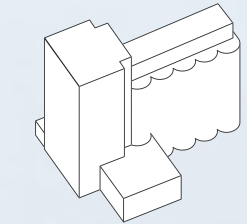
We work across four spatial scales: **region, city, neighborhood, and block**, and link them to four strategic challenges:



▣ **The station as regional hinge:** Bruksstaden bridges east and west, becoming a lively, connected center at the railway.



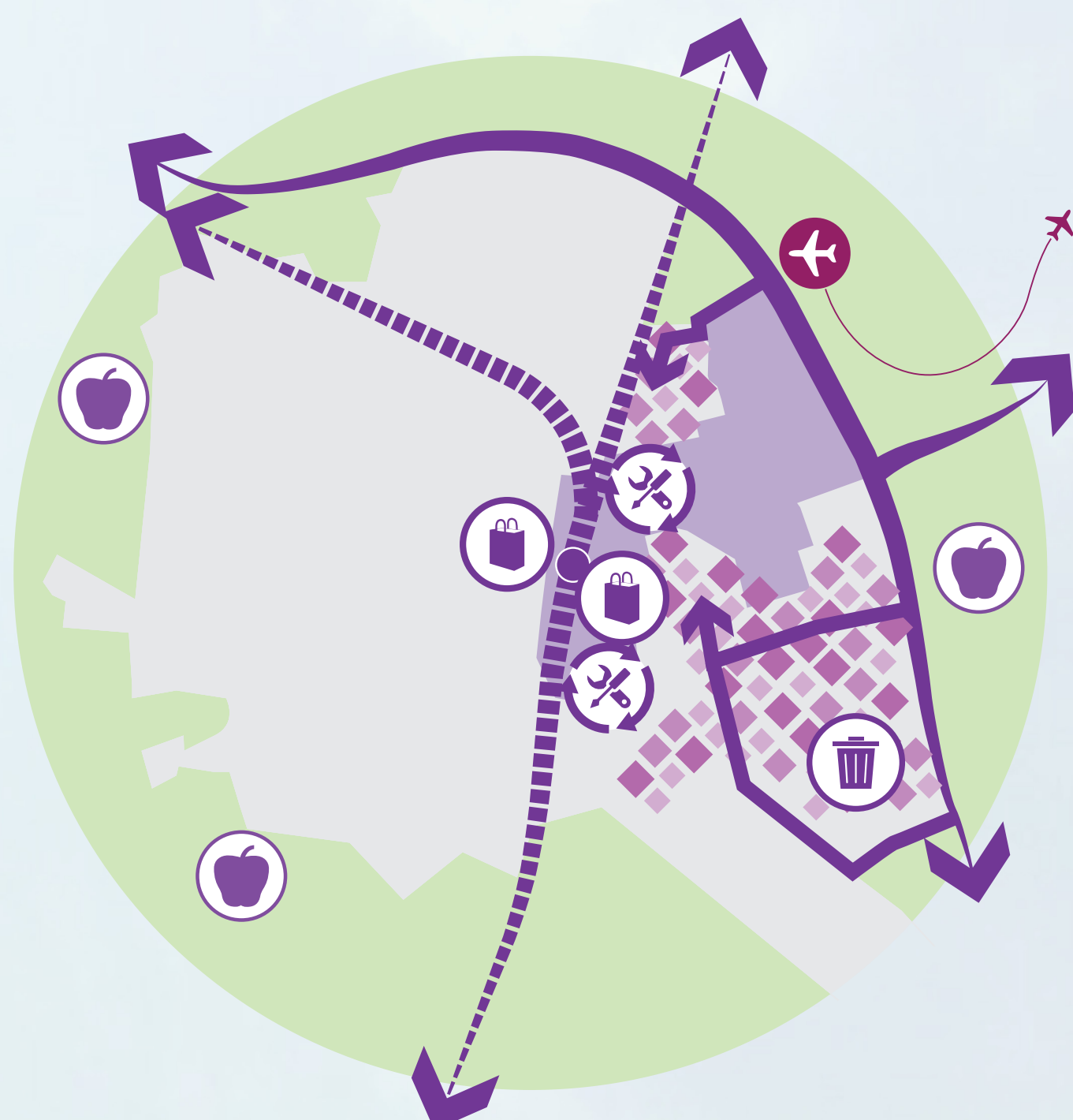
▣ **Agriculture as circular engine:** Local food production and short supply chains reconnect the district to Skåne's agrarian roots.



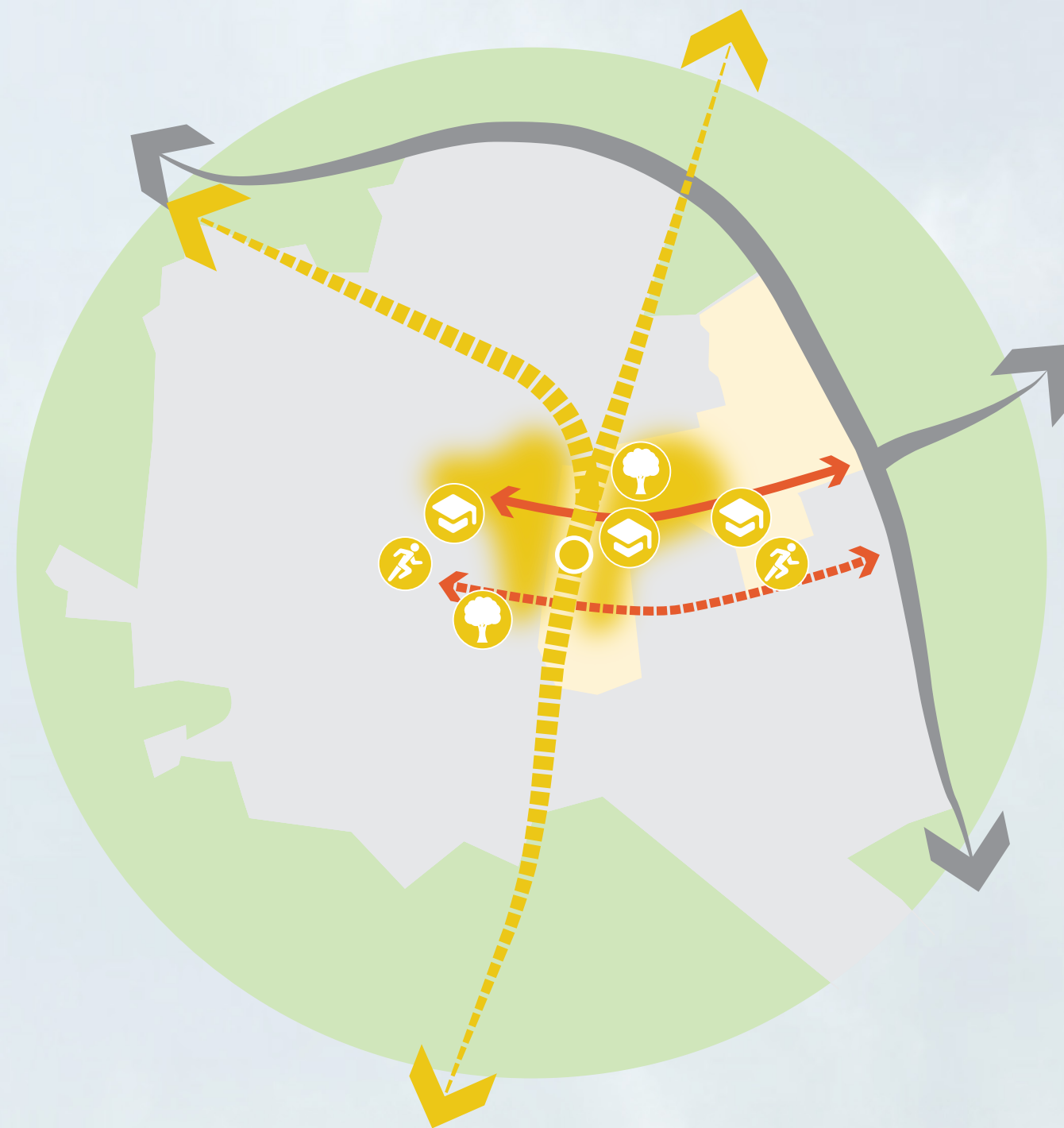
▣ **Industrial heritage as foundation:** Existing buildings anchor the identity of the place and enable new uses.



▣ **Soil as a starting point:** Transformation begins from the ground up, with regeneration as a guiding principle.

**MATERIAL**

Bruksstaden becomes a new urban hub for agrifood, *re:connecting* city life with Skåne's agricultural region. It integrates urban farming, food production, and circular reuse within the neighborhood. Logistics are organized to keep heavy traffic out, supporting local makers and producers with easy access. Local materials and biowaste are reused for construction and composting, closing loops between city and countryside.

**HUMAN**

Bruksstaden bridges western and eastern Eslöv, expanding the city center in a coherent and human-scaled way. This creates an integrated urban core where living, working, and meeting intertwine, made possible by the station's network position, which *re:connects* local life to the wider region. The redesign of Östergatan into a 30 km/h zone with more space for cyclists and pedestrians fosters social inclusion and strengthens neighborhood connections between east and west.

**NATURE**

Green streets in Bruksstaden *re:connect* scattered green patches and developments across western and eastern Eslöv, creating continuous ecological and social links throughout the city. This network strengthens urban biodiversity and links different neighborhoods and green areas into a cohesive whole.

