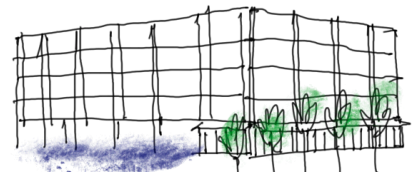


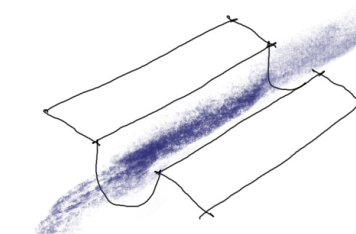
The Northern Border
The wall is opened up strategically. The road narrows to make way for greenery and pathways.



Mobility Hub
The Mobility House handles parking and functions as water storage, which connects to the Water Park.



Water Park
The Water Park serves as the final retention stage for stormwater management, linking to the canal system.



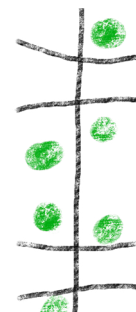
Water Management
Water management is made visible throughout the area and connects between the green corridors through carefully designed elements.



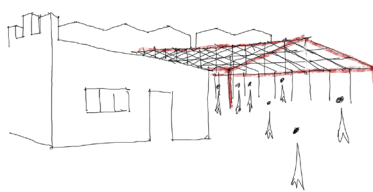
The Canal
A bioswale, which mirrors the tracks, runs through the area, collecting stormwater and connecting the area.



Industrial Backbone
The new buildings take their form from the old track and the brick wall. The wall frames the dwellings courtyards.



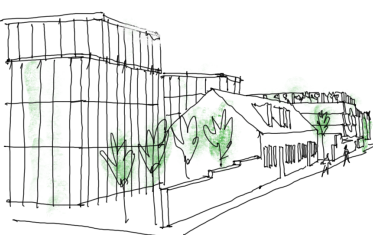
Connecting Berga
The eastern block follows Berga's logic in terms of connections, which in turn creates natural flows through the entire site.



Workshop Square
The site of the old timber trade is revived through transformation. The square creates space for creativity and markets.



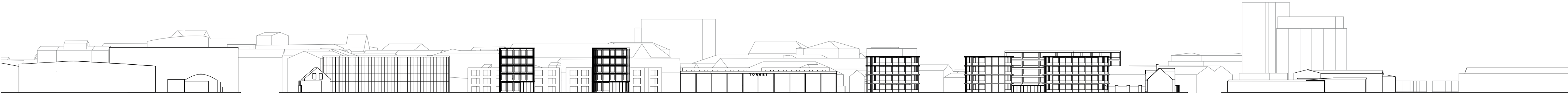
Reprogramming
The halls function as an important marker of the industrial expression; these are opened up and densified.



Southern Border
The street space along the southern boundary is defined while the new buildings shield against noise.

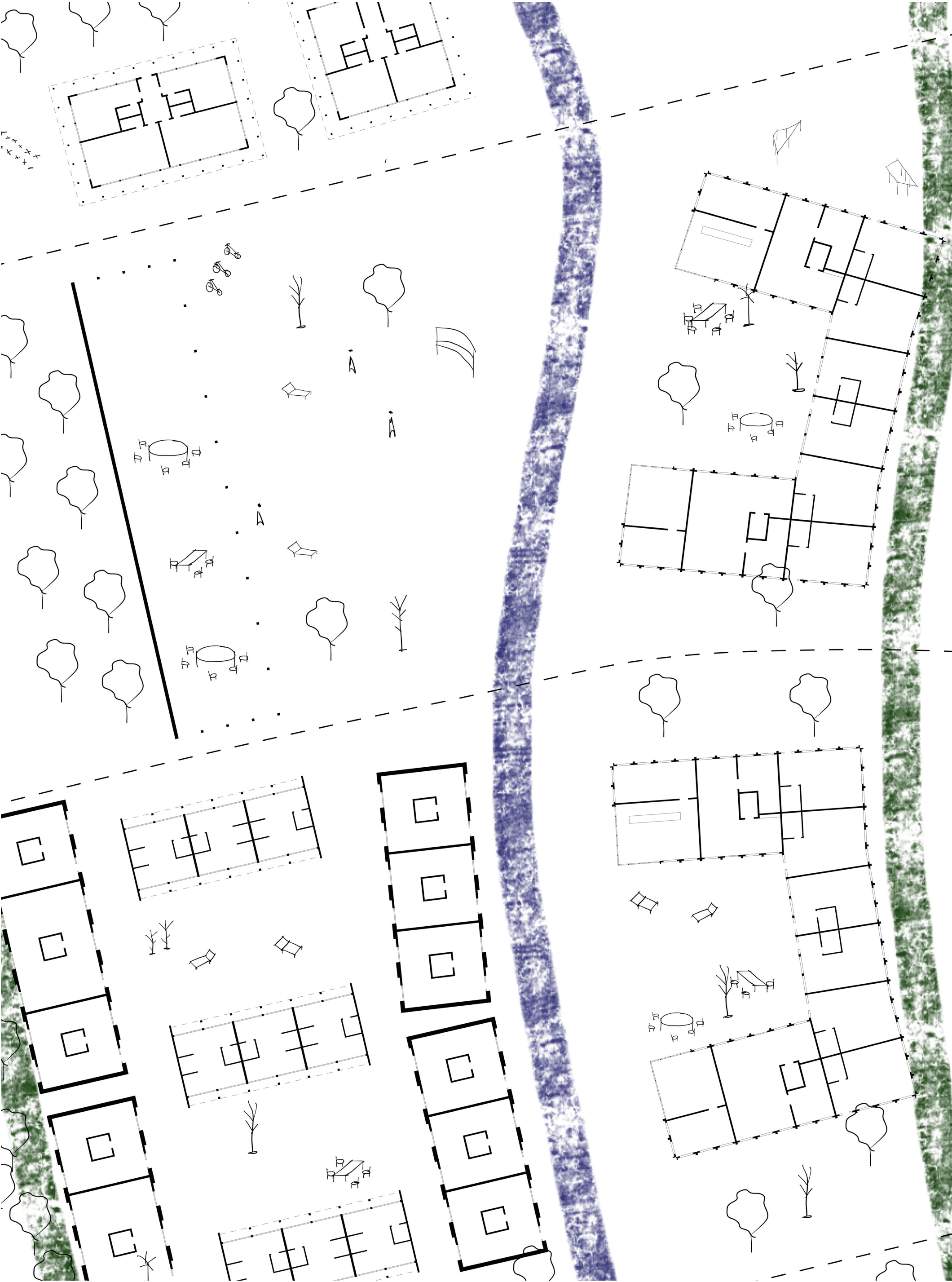
Site 1:2000

0 20 100m

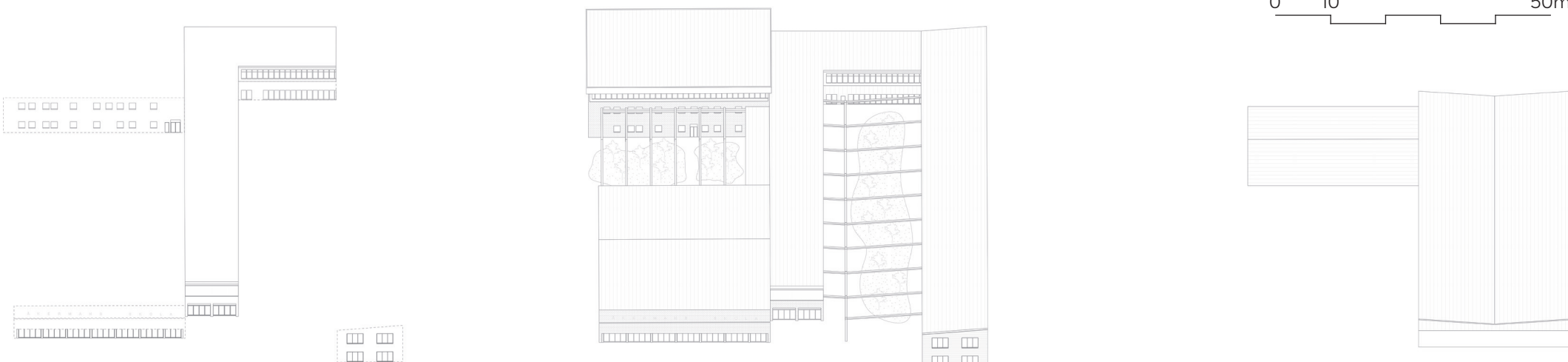


Section along the canal 1:1000

0 10 50m



Life along the canal. Throughout history, communities have often gathered near waterways, as shown by the many streams and small rivers in Eslöv Municipality.



Åkerman's former workshop serves as a precedent for transformation and adaptation within Bruksstaden.

The former industrial building is stripped back, expanded, and opened up to accommodate space for education and sports.

Deconstructed elements are catalogued and reused. The newly created in-between spaces invite greenery and public activity.



Mid-day at Åkersman School. The old meets the new, with industrial memory being retained and new functions coming to life.