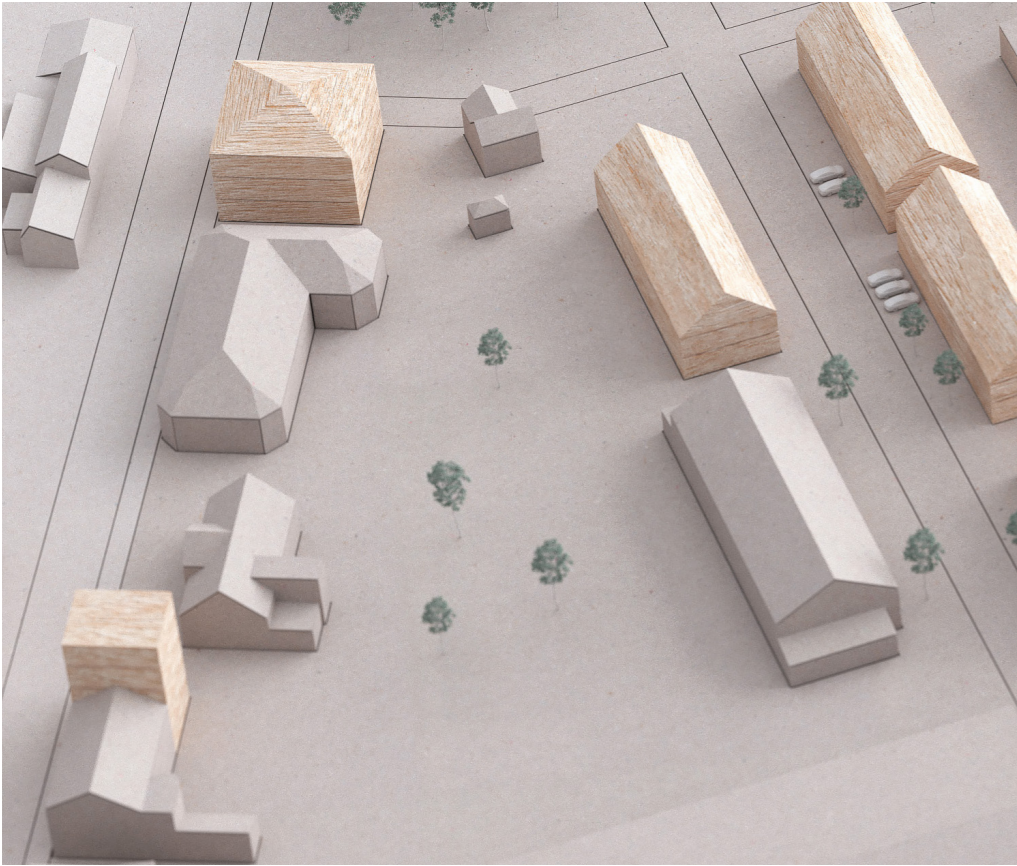




Block XL
The industrial brick buildings are repurposed as base for lighter wooden volumes added on top. The smaller volumes are four and a half stories high, with recessed roof terraces. The larger volumes, as seen in the back, have a terraced volume, three to five stories high, adapting after daylight conditions.
The plinth in the front are occupied by an elderly home, café and bar made from salvaged steel structures, and ordinary housing. In the large volume with lots of dark spaces parking is proposed, as well as a grocery store and a training facility.
The foreground shows the industrial railway overgrown by ruderal vegetation.



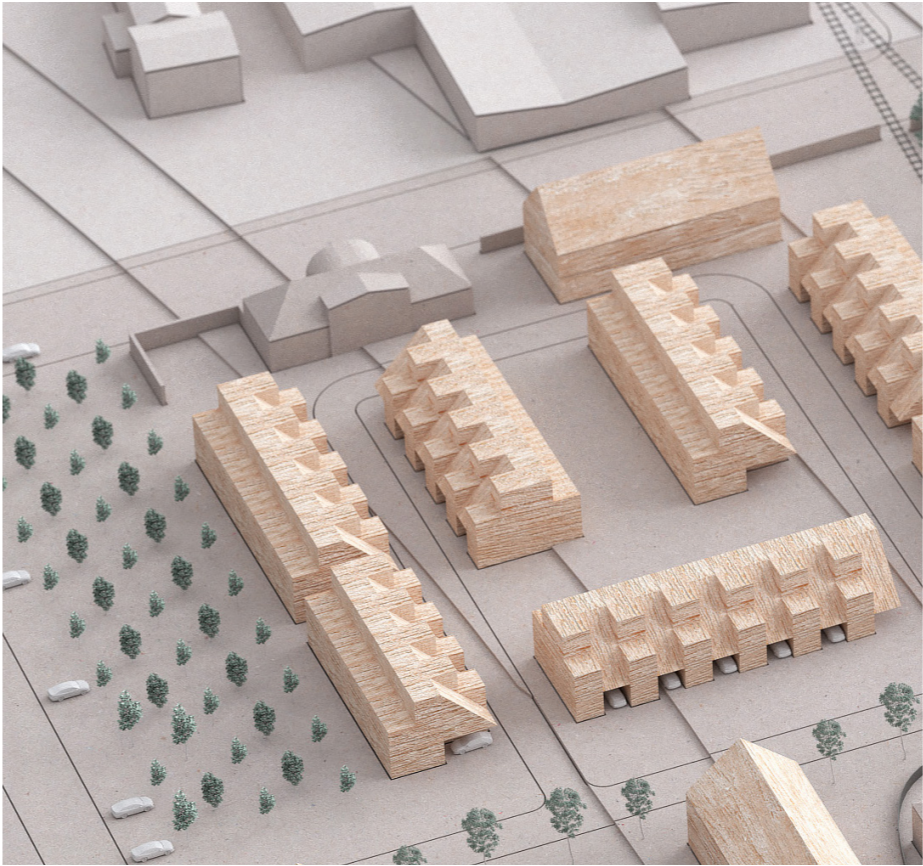
Block S
The foreground shows the recycling depot with scavenged building materials from the demolished buildings. To the right a glimpse of the two and a half stories high buildings from block M are shown. Across the street lies the row houses, whose gardens span between the orchard and the train track park. Both houses have facades made from repurposed wood, to clad their wooden structures. Solar power screens are integrated into the roof to provide electricity, and are directed towards east, south and west.
In the end of the street the former slaughterhouse HQ becomes a background motif. The building is restored and adapted to fit four to five apartments.



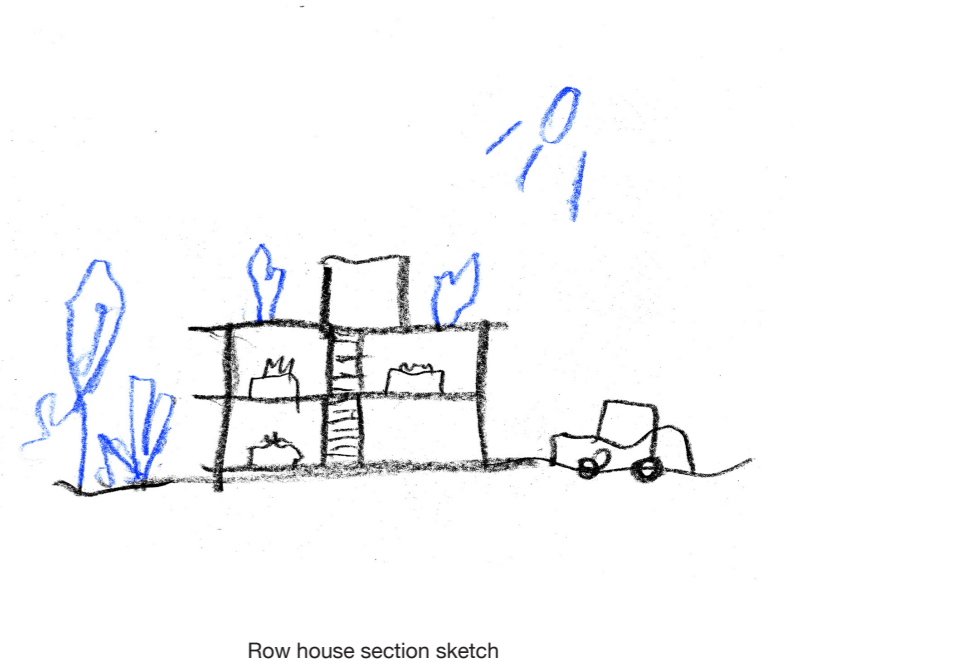
Östra kvarteret is the quarter with the highest urban qualities. There are small gaps where buildings can be situated to further densify, but the overall structure and programmatic use makes it least suitable for development of the three blocks in Bruksstaden.



The new skate park also serves a function in stormwater management. During heavy rainfall, the park acts as a water retention area, able to be temporarily flooded. It is situated next to the railway, close to the current location.



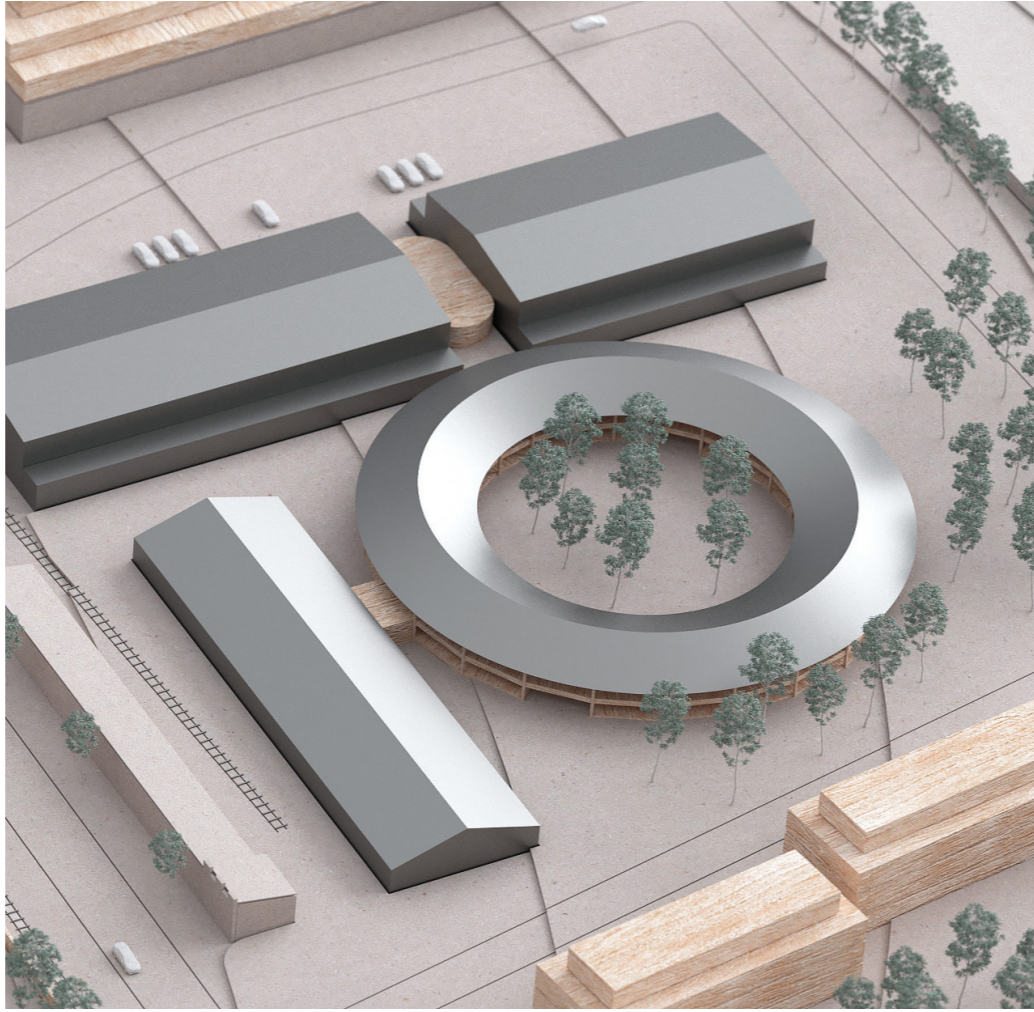
Next to the preserved apple orchard and the early 20th century brick building from Eslöv Slakteri is a small community with row houses. They consist of three stories, with a clear connection to the street and the backside park. The orchard blends into the row house gardens further beyond, to the railway park.



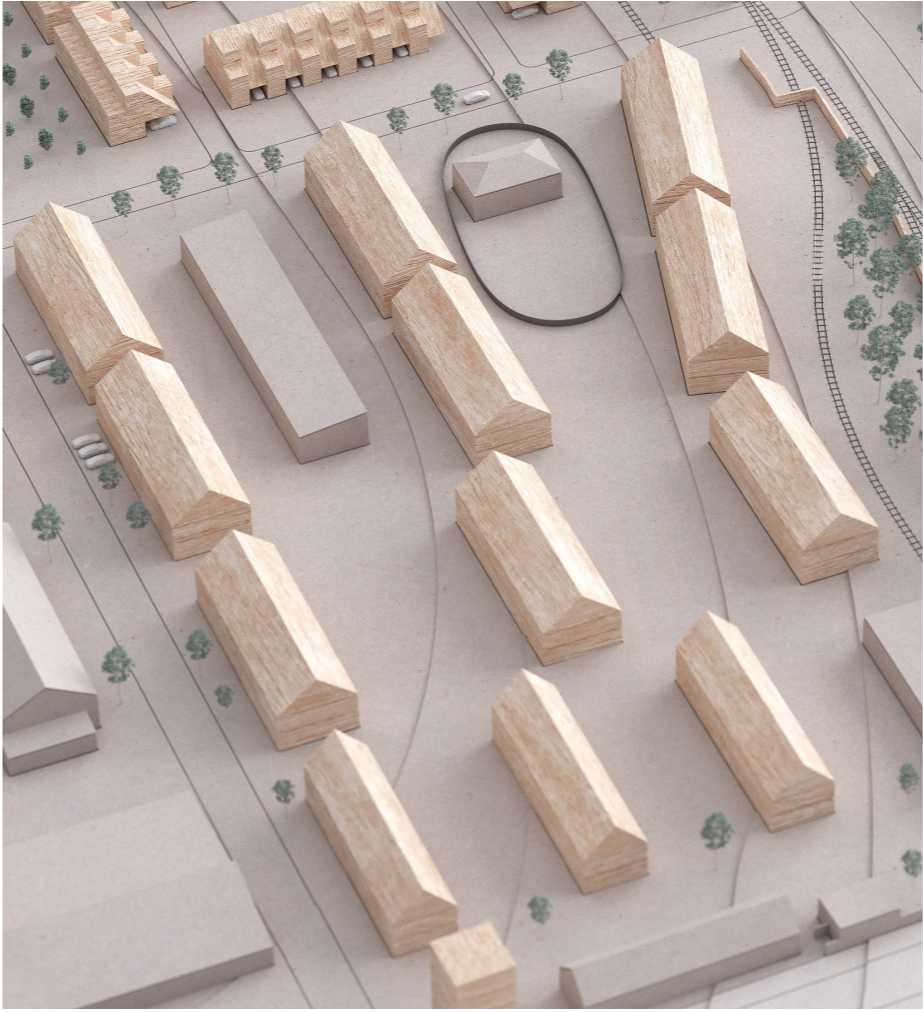
Row house section sketch



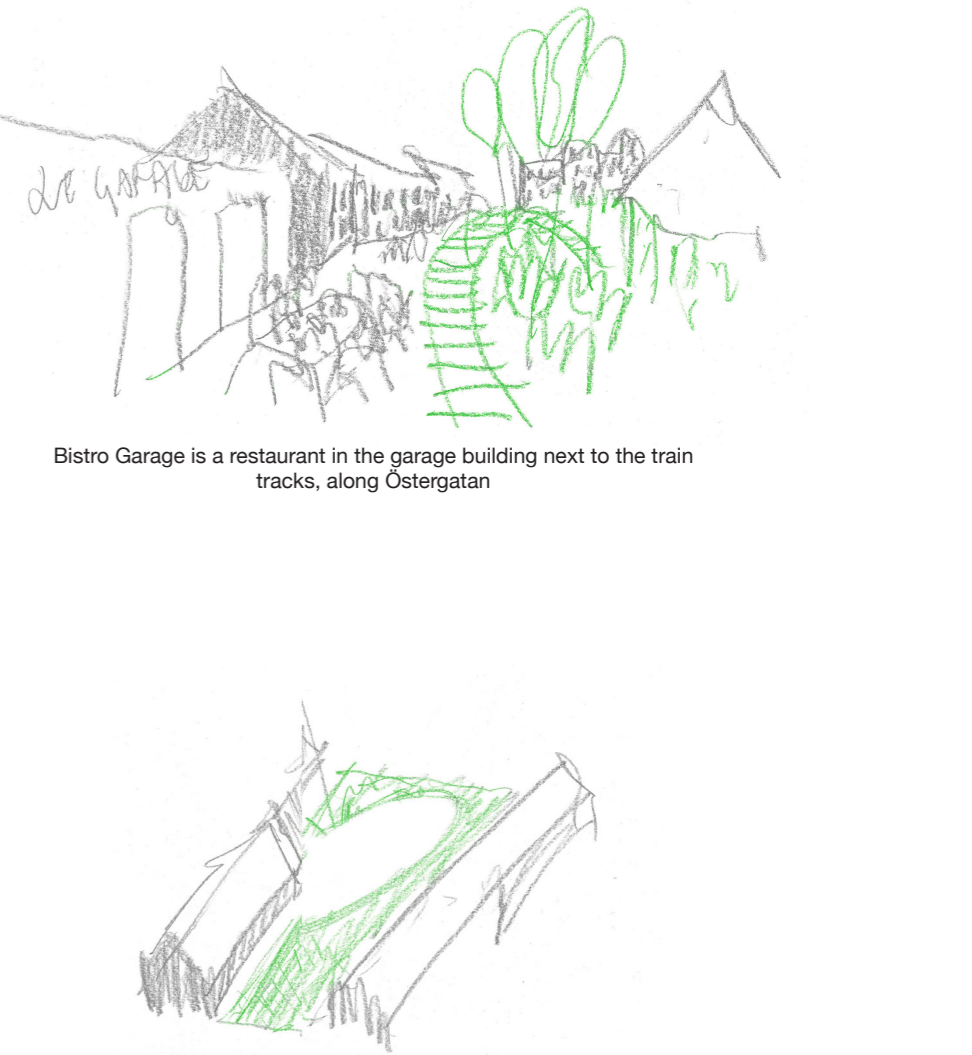
The XL block take advantage of the huge brick industrial buildings on the north east of the Bruksstaden site. Housing is built upon the existing brick base, which due to the large amount of dark programming is suitable to host parking garage, supermarket and sports facilities.



Inside the round shaped primary school is a secluded garden. The round shape effectively connects the adjacent buildings, used for school program and sport facilities. The existing hall to the north corresponds in size to that of a multi sport hall, and is complemented by a smaller sport hall and changing rooms.



The medium sized block have gardens with a patchwork of industrial remnants, to keep a sense of the past even though the development radically changes the urban space. The building to the left is a workshop and storage for dismantled materials, and the building to the right is transformed into a kindergarten.



Bistro Garage is a restaurant in the garage building next to the train tracks, along Östergatan

Principle of medium sized quarter's garden

The buildings flank a green space with a hole inside. The green space is a new surface, providing easy access for the residents - the white hole is previous conditions, left as is