



PRODUCTIVE COURTYARD

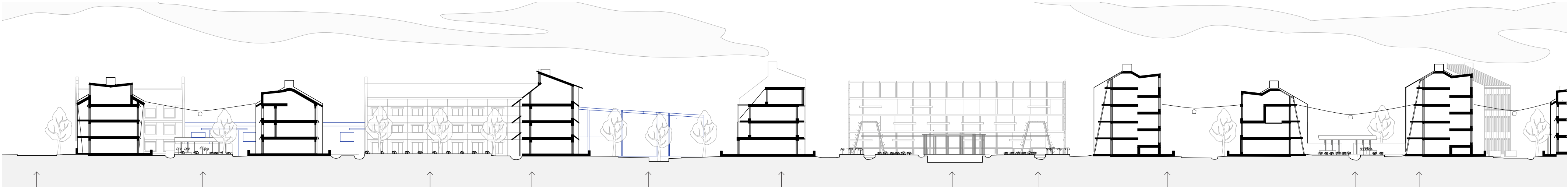
The productive courtyard, cultivated with crops maintained by the farming hub, forms a vibrant green space for residents. It also serves as a recreational area with sheltered spots under pavilion roofs. South-facing balconies made from recycled fencing and metal grating overlook the courtyard, providing space for large plants and views of the greenery. Enclosed by walls and gab-

les, the courtyard offers semi-privacy and creates an intimate, well-defined outdoor environment.

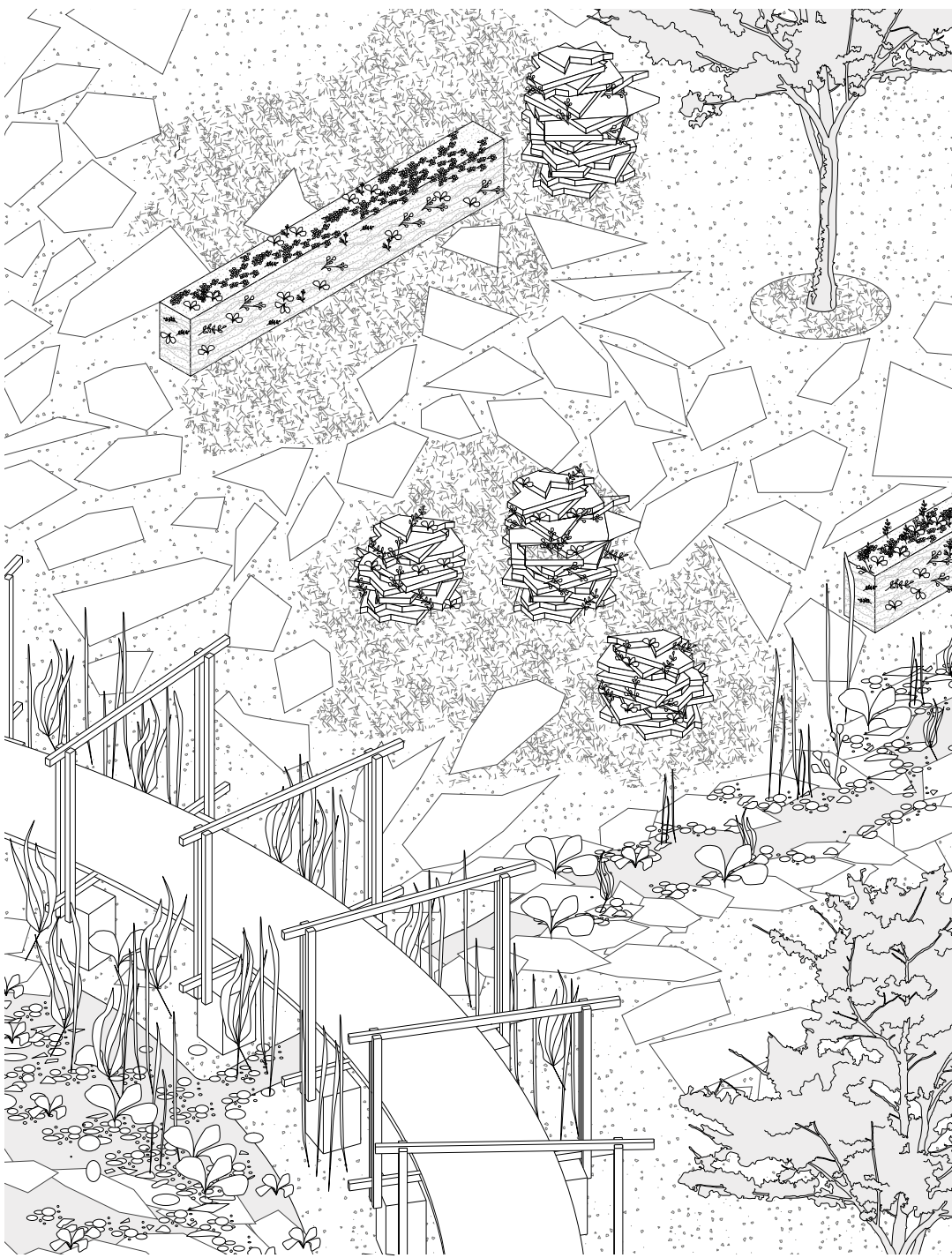


RESIDENTIAL STREET

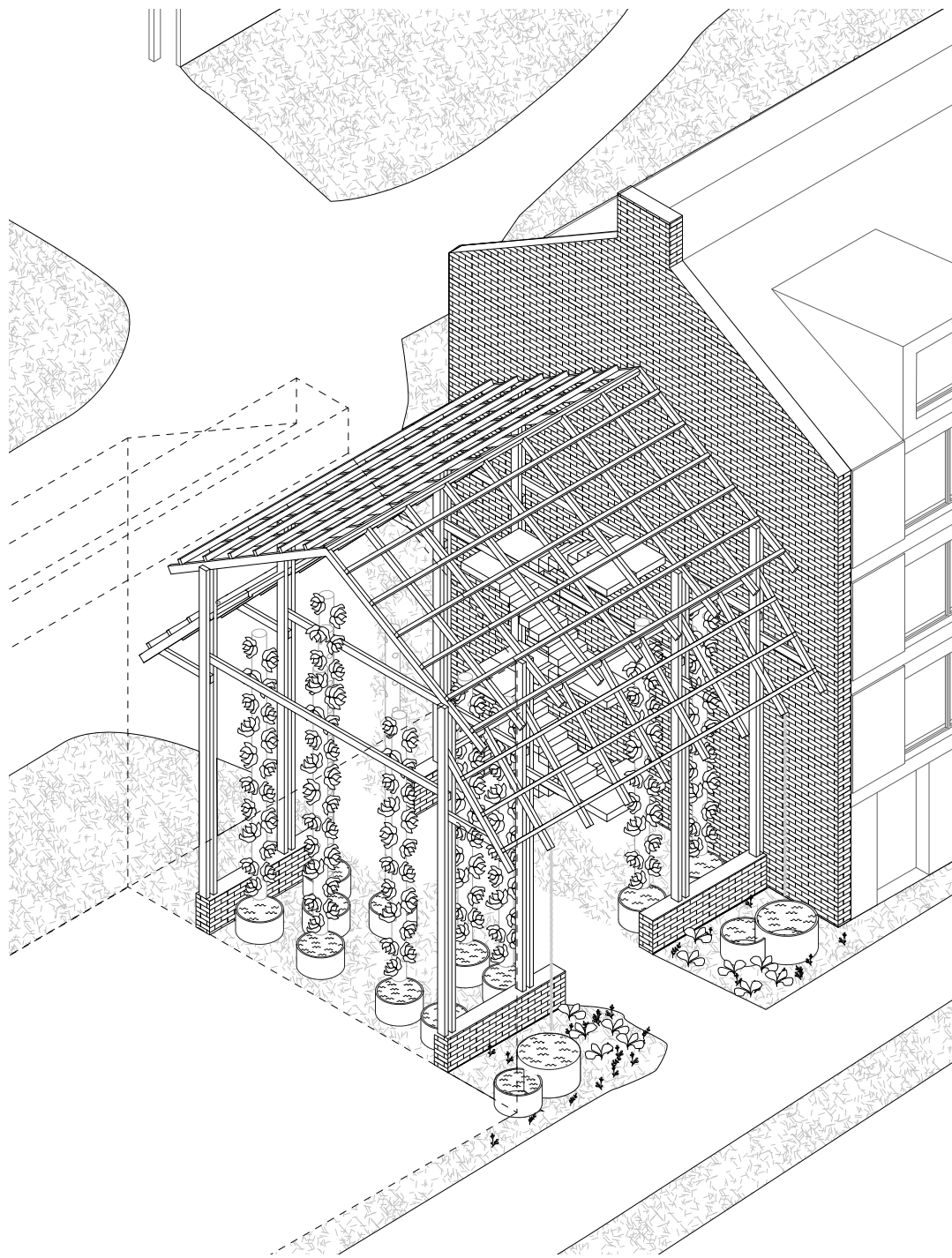
One-way shared street with residential access. An open stormwater system is integrated into stone- and brick-paved streets to enhance water infiltration. Front gardens, framed by reclaimed concrete blocks, contribute with greenery and soften the streetscape. The architecture features reused brick and concrete element gables, facades constructed from straw, rammed earth, reclaimed wood, and clay.



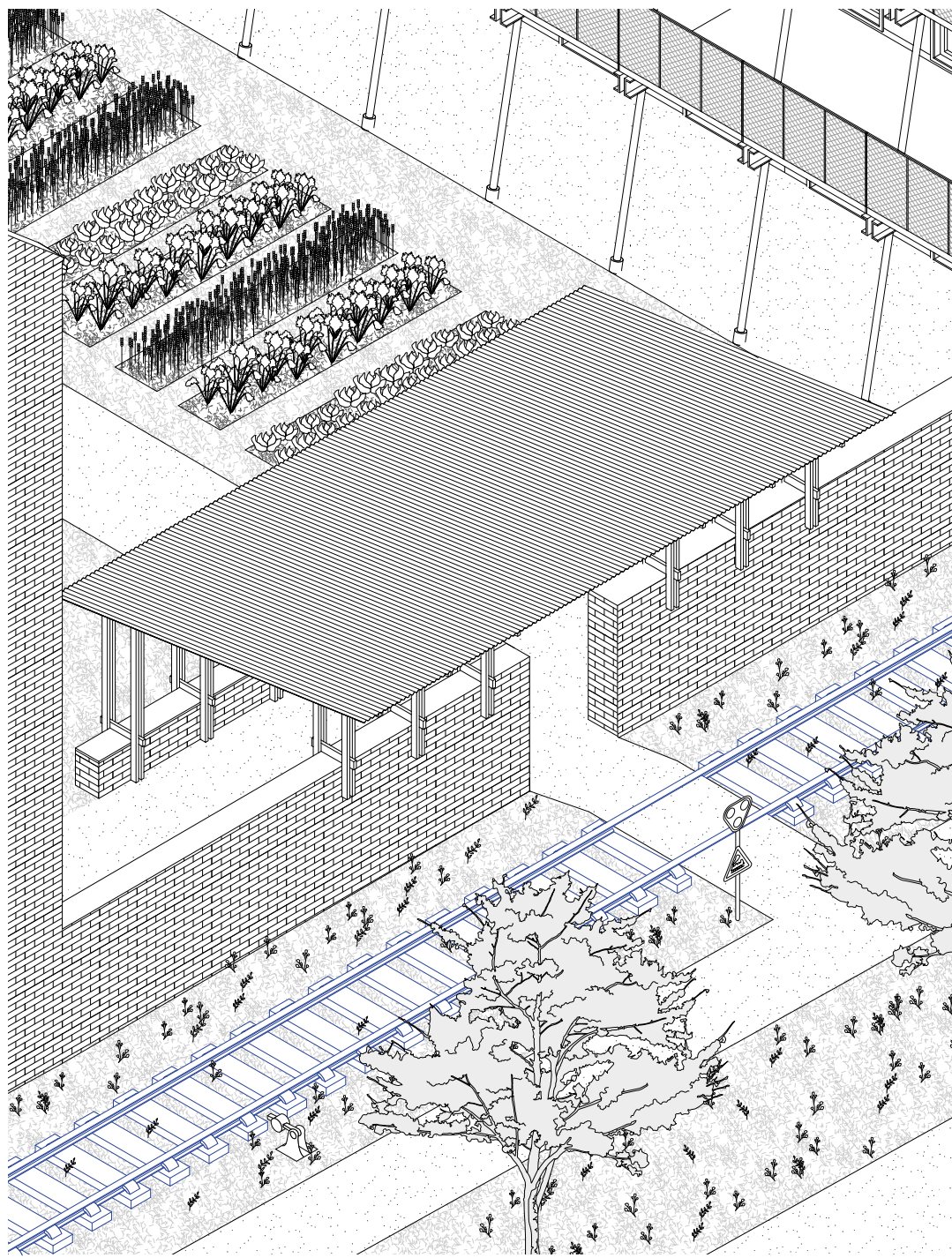
SECTION A-A 1:500



PUBLIC: NEIGHBOURHOOD AND STORMWATER PARK



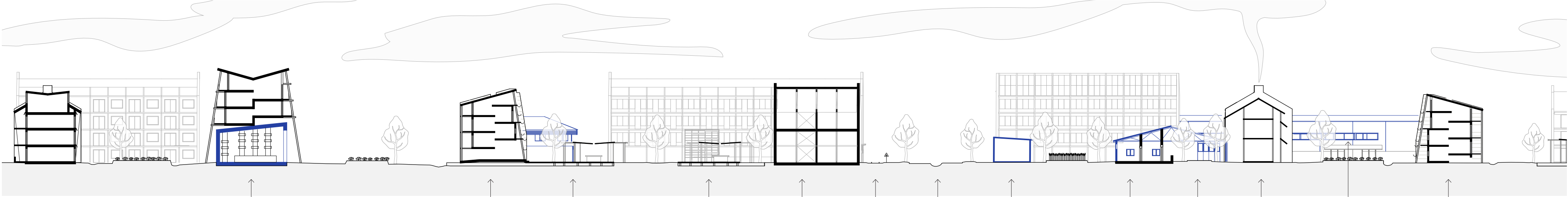
SEMI PUBLIC: ENTRANCE AND GREENHOUSE



SEMI PRIVATE: WALLED COURTYARD

The spatial design is based on a mixture of publicness hierarchies, each supporting life in different microclimates. It is for a life in rhythm with natural seasonal shifts and also to prepare for a changing climate. One of the public spaces are the parks, with greenery and actions for water management, recreational places in close connection to it and also habitat for different species. One example of a habitat for organisms, fungi, and plants is installations made from reclaimed asphalt blocks and rammed earth walls.

The semi-public spaces such as entrance greenhouses and residential streets, follow the same principles, while also integrating private spaces, including front gardens and large balconies or roofs that offer protection from the sun and protection for building façades. The use of walls as structural and aesthetic backbones ties the area together. They create continuity in the design language while enabling intimate and protected spaces. The addition of small pavilions as a complement for living, placed along walls or in green fields, offer weather-protected spaces where residents can engage with their surroundings or personal interests.



SECTION B-B 1:500